

GRABO

Acoustic 43

PREMIUM ACOUSTIC FLOOR COVERING

PERFORMANCE, FEATURES & BENEFITS

Excellent acoustic properties (≥ 19 dB) | Excellent foot comfort
 Perfect chemical resistance and easy cleaning | Antistatic | Anti-bacterial | 10 year warranty

SPECIFICATIONS

DESCRIPTION

Construction	heterogeneous	
Total thickness	EN ISO 24346	3,2 mm
Wear layer thickness	EN ISO 24340	0,7 mm
Width of roll	EN ISO 24341	2 m
Length of roll	EN ISO 24341	25 lm
Total weight	EN ISO 23997	2,7 kg/m ²

CLASSIFICATION

European classification	EN 685	class: 34/42
-------------------------	--------	--------------

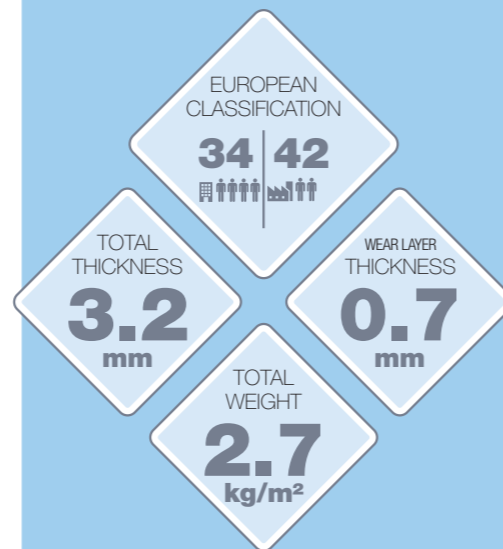
PERFORMANCE

Abrasion group	EN 660-1	T
Residual indentation	EN ISO 24343	max. 0,2 mm
Dimensional stability	EN ISO 23999	max. 0,2 %
Fire resistance	EN 13501-1	class: Bfl-s1
	BS 476	class: Class1
	Gost 30402-94	class: G1
Impact sound reduction	EN ISO 717-2	$\Delta L_w=19$ dB
Slip resistance	DIN 51130	R10
Electrical resistance	EN 1815	< 2 kV
	EN 1081	$\leq 10^9 \Omega$
Chemical resistance	EN ISO 26987	✓
Bacterial resistance	EN ISO846:1999	✓
Light fastness	EN 20105 B02	grade 6
Castor chair resistance	EN ISO 4918	✓
Surface treatment		X-Pur
Anti bacterial and fungicid treatment		graboSAN
Seaming method		hot or cold welding
Warranty		10 year

HETEROGENEOUS

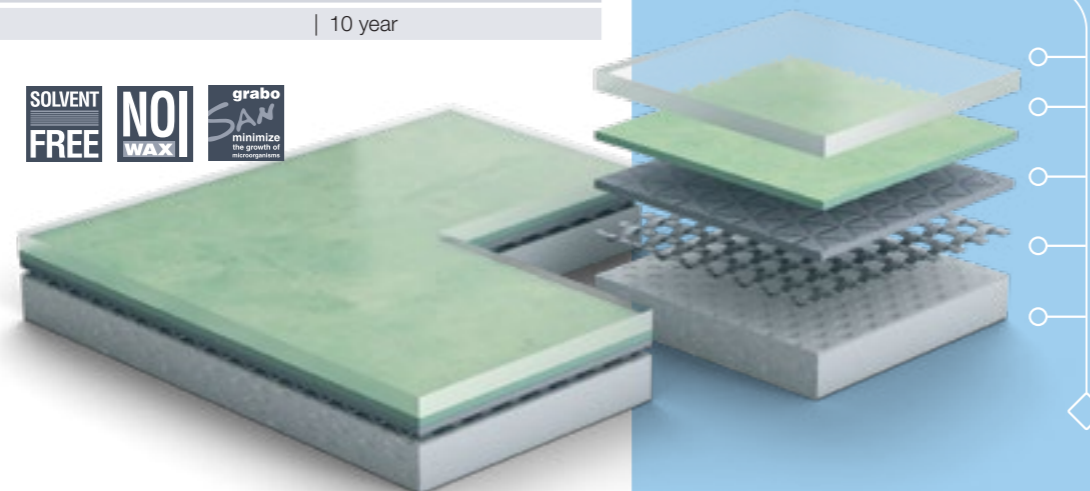
RECOMMENDED USAGE

Library | Education | Healthcare
 Corporate | Retail | Anywhere
 acoustical property is needed



CONSTRUCTION

- X-Pur Wear layer
- Design
- Compact layer
- Glass fibre reinforcement
- Foam backing



ACOUSTIC 43



1151-371-869-281

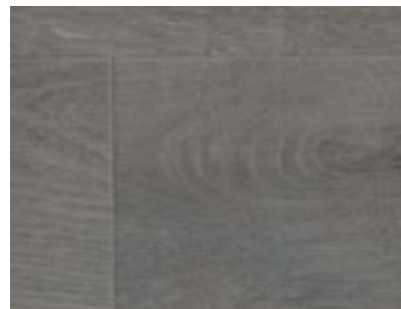
Natural



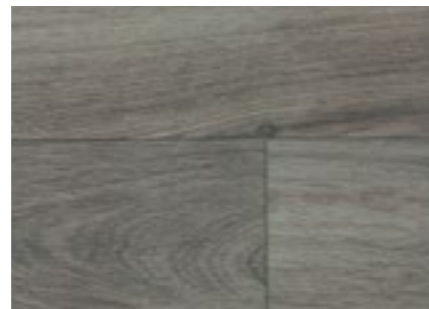
2519-371-662-281



3151-378-858-281



1146-393-668-281



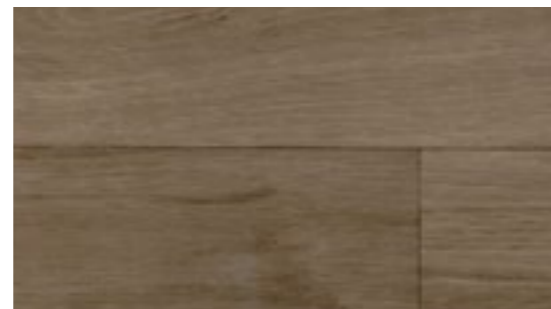
1151-371-869-281



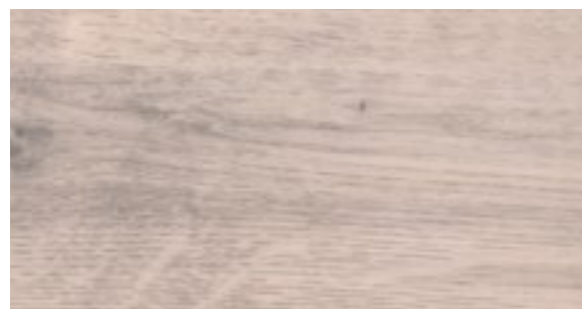
1141-371-868-281



1001-384-874-281



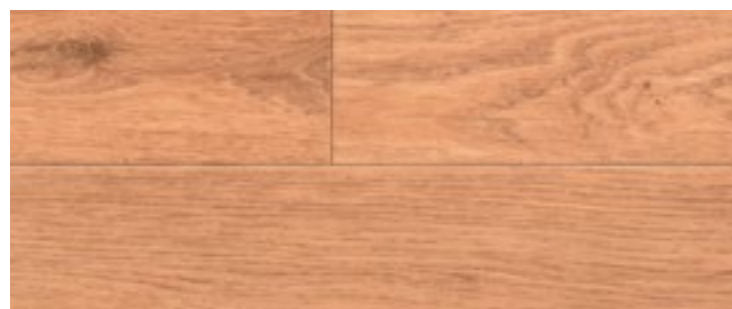
2561-384-867-281



393-672-281



393-669-281



393-653-281



393-652-281

Concrete



391-674-275



391-673-275



391-653-275



391-660-275



391-676-275



391-654-275



391-656-275



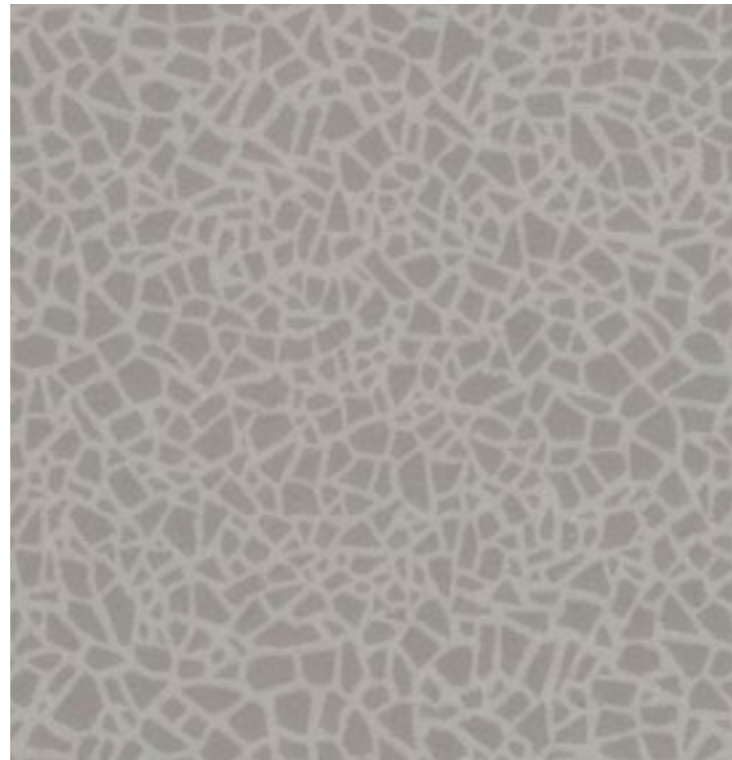
391-671-275

HETEROGENEOUS

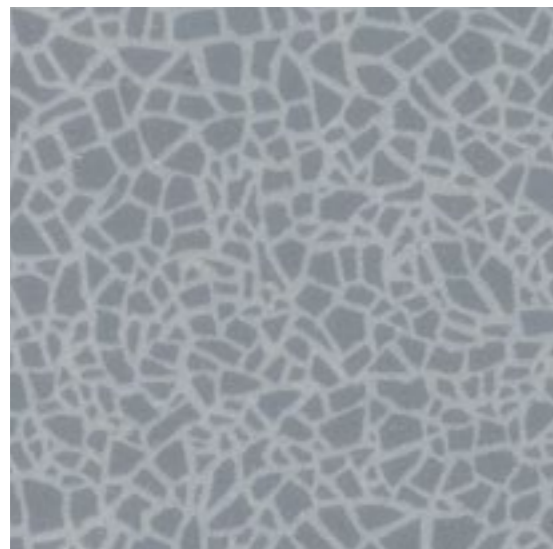
Mosaic



388-656-275



388-671-275



388-670-275



388-662-275



388-677-275



388-664-275

Rock



386-657-275



386-674-275



386-683-275



386-668-275



386-671-275



386-670-275



386-678-275



386-680-275

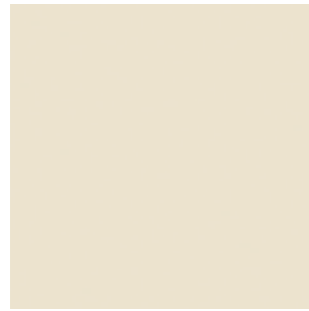


386-682-275



386-681-275

Uni



1008-275



2028-275



2940-275



2089-275



3319-275



2956-275



1343-275



4220-275



3070-275



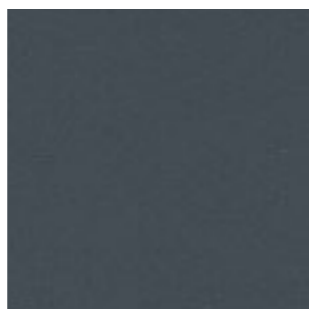
1194-275



7235-275



7089-275



1895-275



1290-275



6150-275



6110-275



6180-275



1991-275

HETEROGENEOUS



3319-275