

GRABO

Standart PUR

COST EFFECTIVE COMPACT FLOOR COVERING

HETEROGENEOUS

PERFORMANCE, FEATURES & BENEFITS

2/4 meter widths | Cost effective | Broad color range | Great patterns | High residual indentation | Dimensionally stable | Anti-bacterial | Antistatic | 10 year warranty

SPECIFICATIONS

DESCRIPTION

Construction	heterogeneous	
Total thickness	EN ISO 24346	2,0 mm
Wear layer thickness	EN ISO 24340	0,7 mm
Width of roll	EN ISO 24341	2/4 m
Length of roll	EN ISO 24341	20 lm
Total weight	EN ISO 23997	2,0 kg/m ²

CLASSIFICATION

European classification	EN 685	class: 23/32/41
-------------------------	--------	-----------------

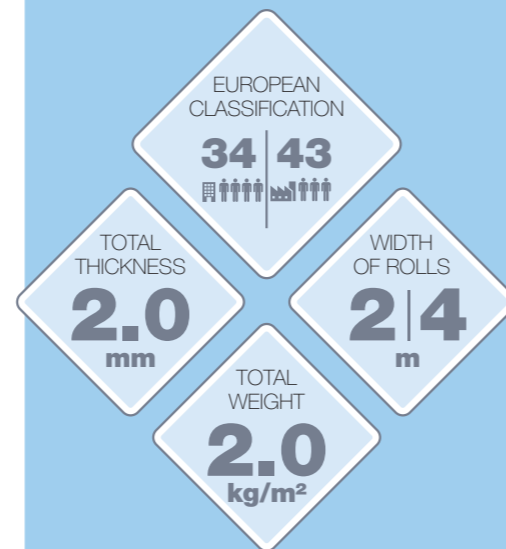
PERFORMANCE

Abrasion group	EN 660-1	T
Residual indentation	EN ISO 24343	max. 0,1 mm
Dimensional stability	EN ISO 23999	max. 0,2 %
Fire resistance	EN 13501-1	class: Bfl-s1
	DIN 4102/ÖNORM	class: B1
	Gost 30402-94	class: G1
Slip resistance	DIN 51130	R9
	EN 13893	class: DS
Electrical resistance	EN 1815	< 2 kV
Chemical resistance	EN ISO 26987	✓
Bacterial resistance	EN ISO846:1999	✓
Light fastness	EN 20105 B02	grade 6
Castor chair resistance	EN ISO 4918	✓
Surface treatment	PUR Surface	
Anti bacterial and fungicid treatment	graboSAN	
Seaming method	hot or cold welding	
Warranty	10 year	



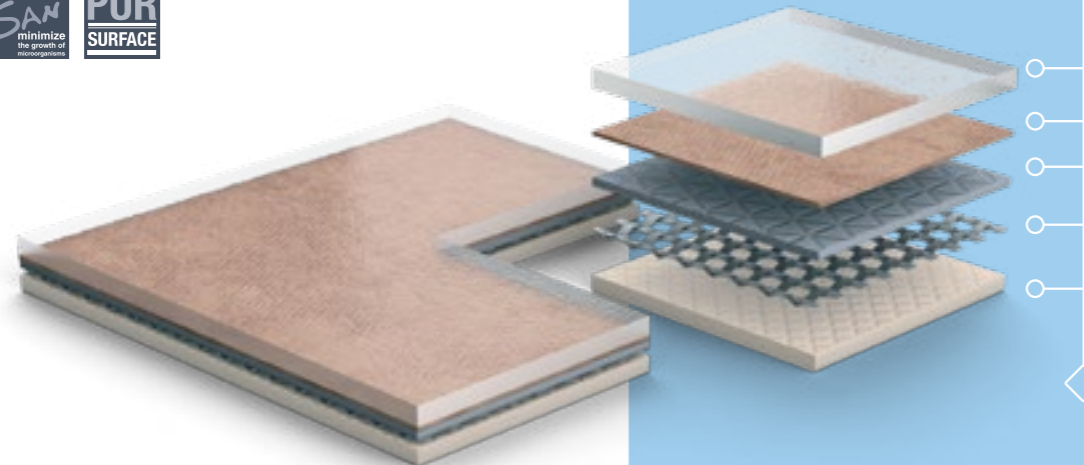
RECOMMENDED USAGE

Education | Healthcare | Retail | Hospitality | Offices



CONSTRUCTION

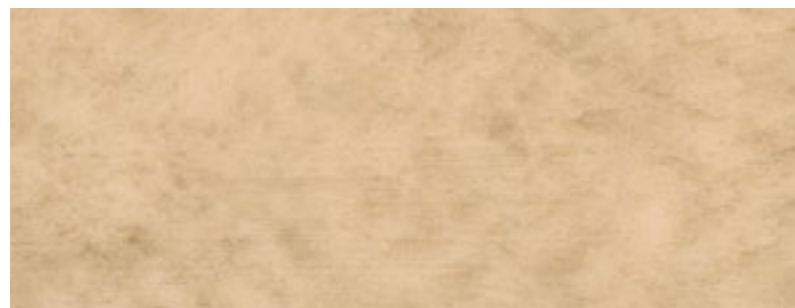
- PUR Surface wear layer
- Design
- Compact layer
- Glass fibre reinforcement
- Back layer



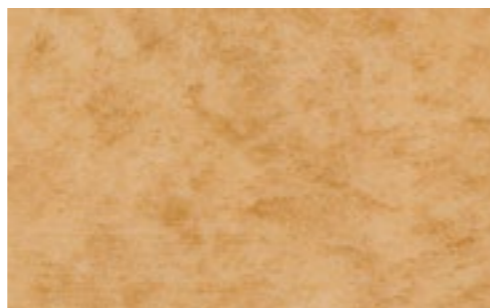
STANDART PUR



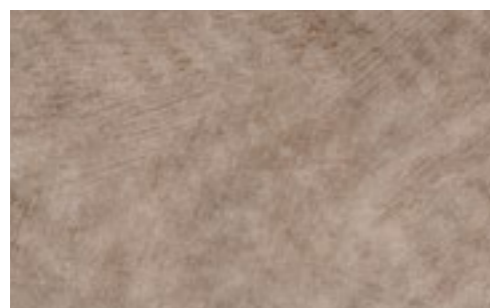
4564-469



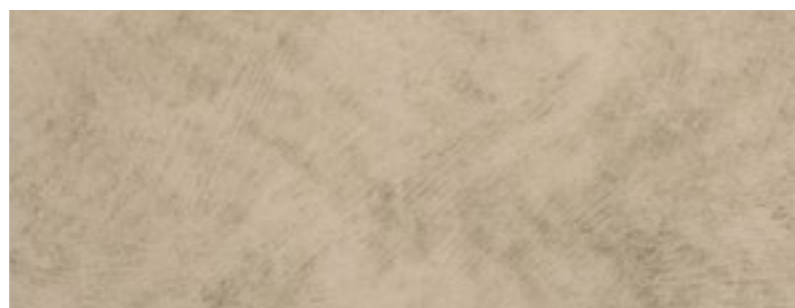
4326-451



4326-452



4326-467



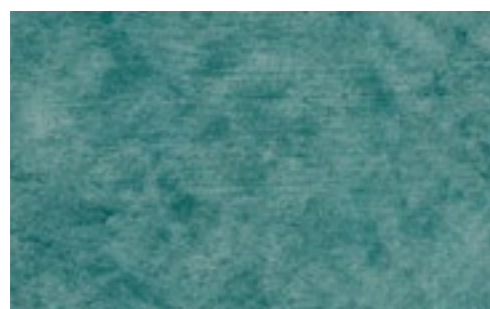
4326-468



4326-460



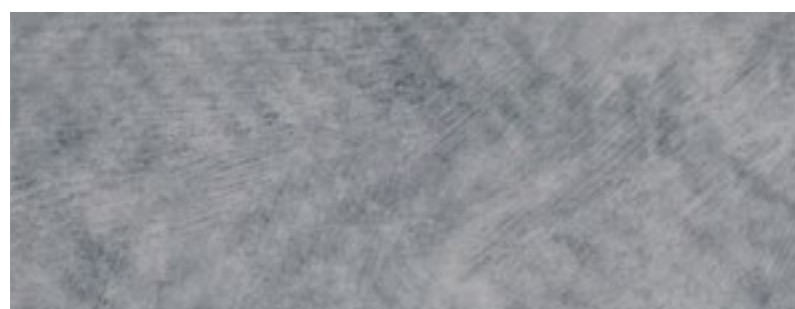
4326-454



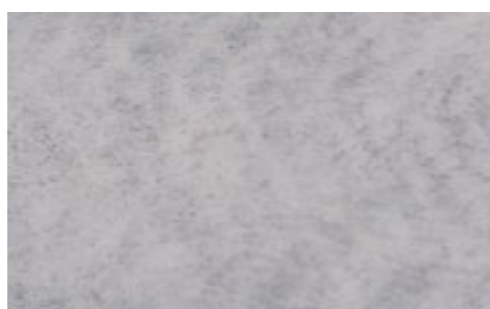
4326-463



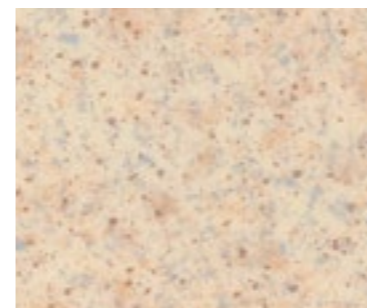
4326-458



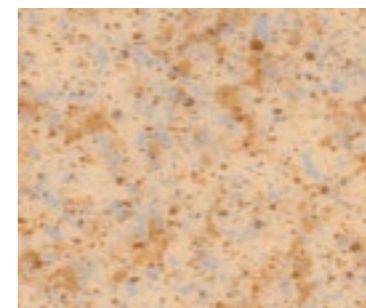
4326-457



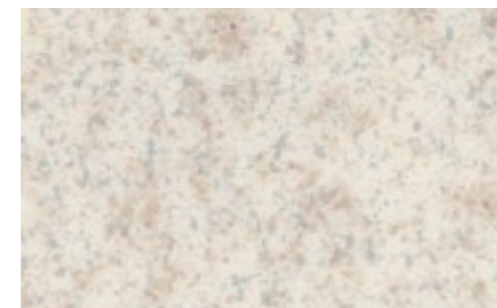
4326-456



4564-469



4564-470



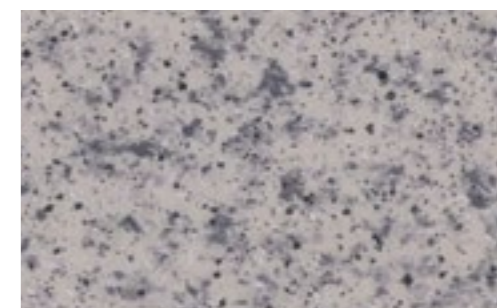
4564-493



4564-476



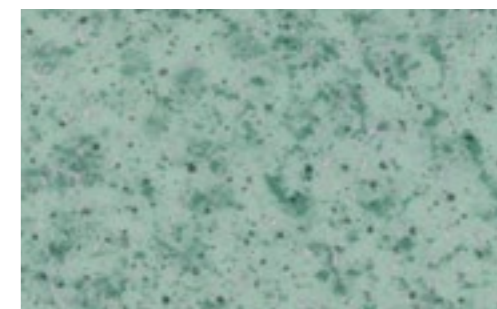
4564-473



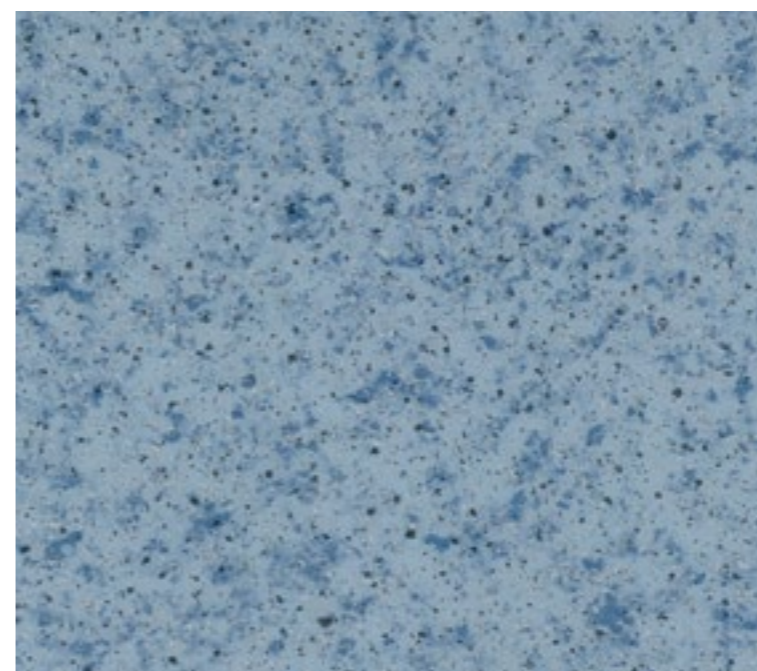
4564-474



4564-494



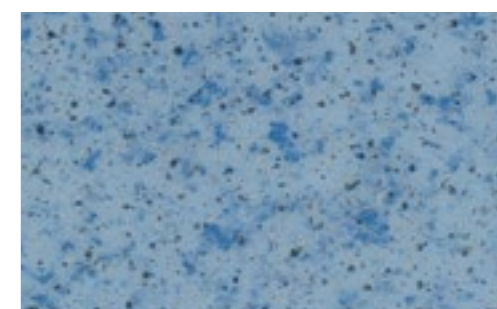
4564-460



4564-472



4564-496



4564-471

STANDART PUR

Stone



4319-487



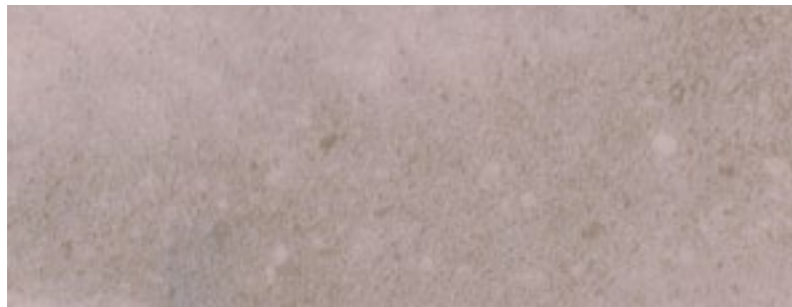
4319-485



4319-473



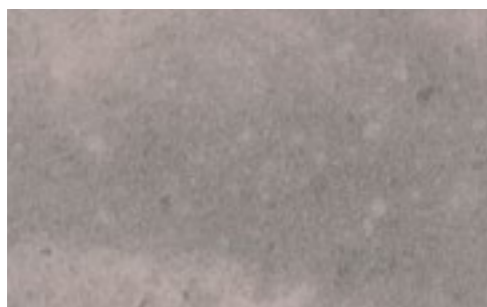
4319-484



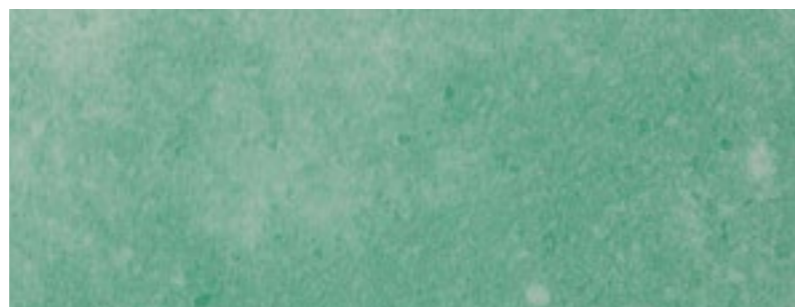
4319-475



4319-489



4319-472



4319-486



4319-488



4319-481



4319-488