



GRABO



LUXURY
VINYL TILE FLOORING
APPLICATION GUIDE
FOR GRABO LVT
DRY BACK FLOOR COVERINGS

100%
**WATER
RESISTANT**

Grabo commercial and residential dry back luxury vinyl tiles and planks are highly wear resistant, aesthetic, waterproof floor coverings with naturalistic texture. Keeping the recommendations to the installation and cleaning you will be satisfied with our products for a long time.

1. Subfloor

Subfloor must have excellent quality, must be properly prepared and needs to be hard, solid, stable, plain, levelled, clean and dry. Wet content max. 1,8 CM% in case of cement-estrich subfloor.

Suitable subfloor-types:

- concrete | cement
- anhydrite
- plywood
- stone
- terrazzo
- ceramic
- solid PVC

Do not install over

- carpet
- cushioned vinyl
- wooden parquet
- laminate or other floating floor
- asphalt and bitumen

2. General instructions for before installation

All flooring materials and the adhesive should be acclimatized to the jobsite temperature conditions for a minimum 24 hours prior to beginning of the installation. Ideal jobsite temperature 18-25°C.

You must check before installation the colour compliance and surface.

Use same batch inside the room.

3. Adhesive

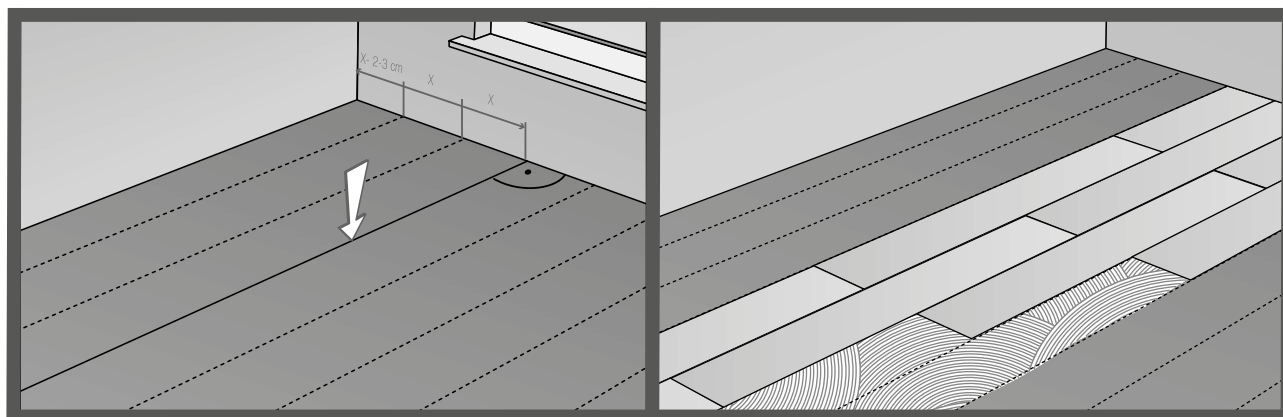
Adhesives recommended: pressure sensitive, water based acrylate glue, like Ceresit K 188E or Uzin KE 2000S or Mapei Ultrabond Eco 4LVT or other brands equivalent with these.

Consumption of glue: cca. 250 gr/m² / spatula A1 in case of absorbent sub-floor and cca. 200 gr/m² / spatula A4 in case of non-absorbent sub-floor.

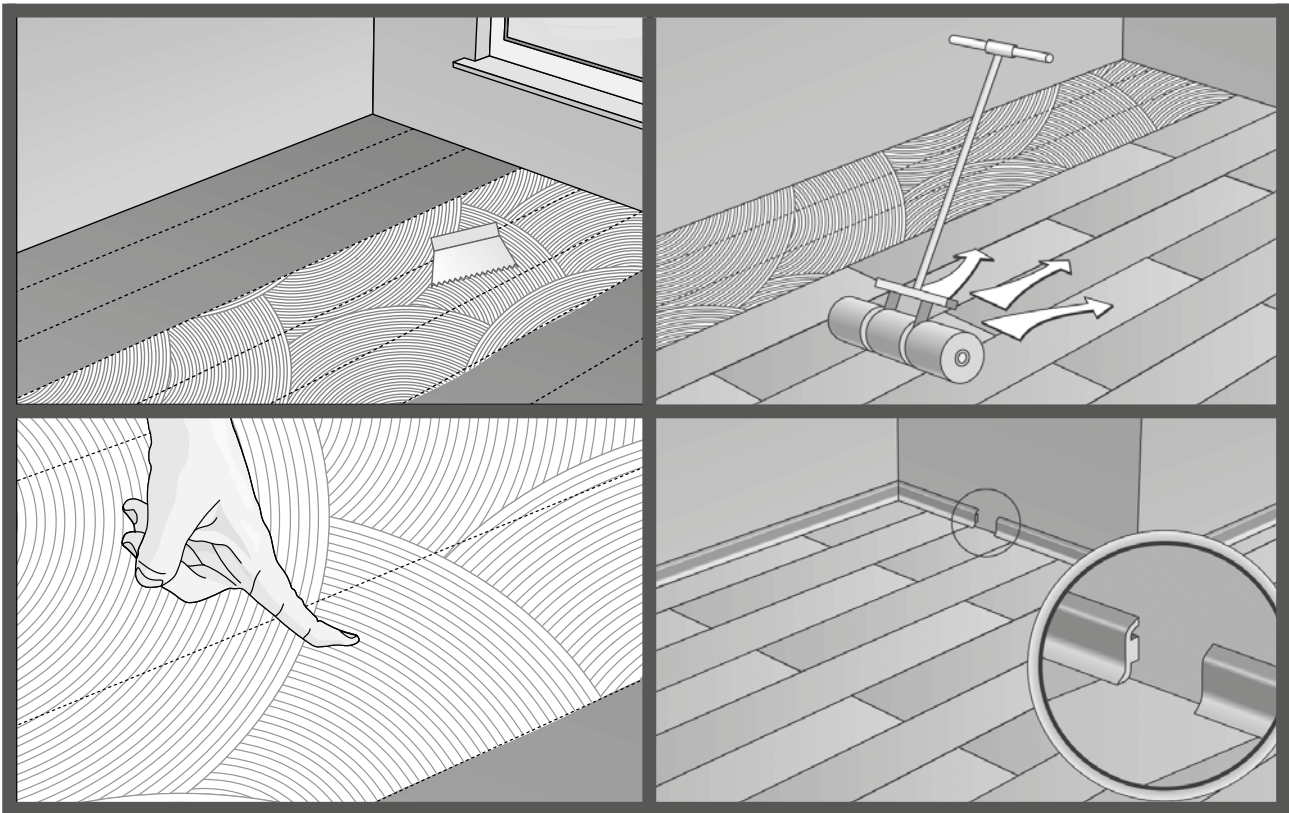
In case of wet areas use 2-component PUR adhesives, like Ceresit R 710, Uzin KR 430, Mapei Adesilex G19.

4. Laying on well prepared, levelled plain subfloors

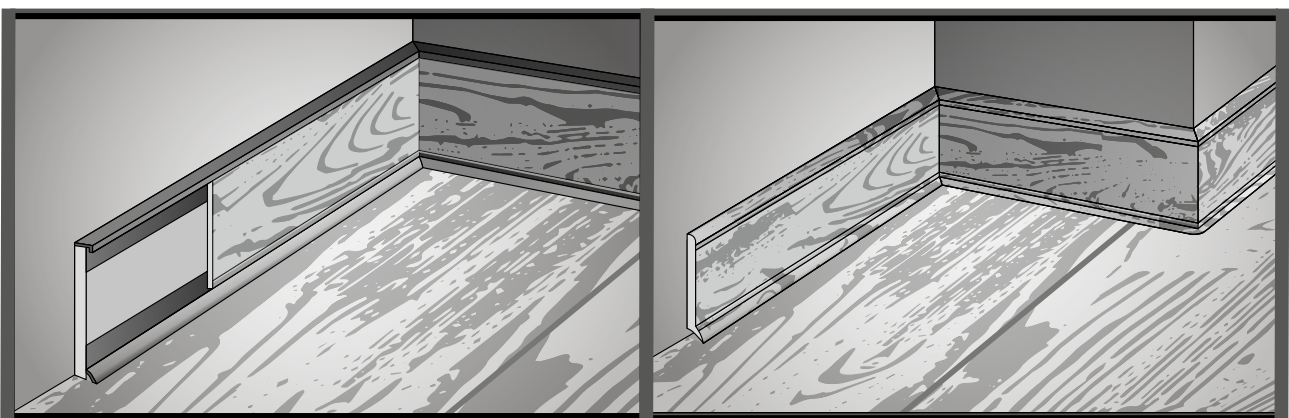
- LVT planks and tiles are to be installed generally parallel to the main light source.
- Measure the size of the room and mark the straight starting line of the installation. CAUTION! For best result use a steel ruler to start first row. The distance of the starting line from the deepest part of the wall should be minimum the width of the plank minus 2-3 cm, or multiple of the width of the plank minus 2-3 cm.
- Coat the adhesive on the subfloor with the spatula, coated surface should be practically max. 3-4 rows at the same time and wait until the adhesive will be dry. Make finger test! Follow the instructions of the glue manufacturer.



- Plank LVT should be installed by offsetting method. Starting on the starting line, place the plank pieces side by side, glue them on the subfloor, and closely fit the edges of the planks to each other. Roll down the plank glued down by hand with cork rubber. If the last plank is longer then needed, mark and cut the plank installing the cut end next to the wall.
- The remainder of the plank can be used to start the next row if its length is minimum 30 cm.
- After gluing roll down well the planks with a steel roller 50-70 kg in all direction, forward and back and diagonally.
- Let 2-3 mm dilatation gap at the walls.



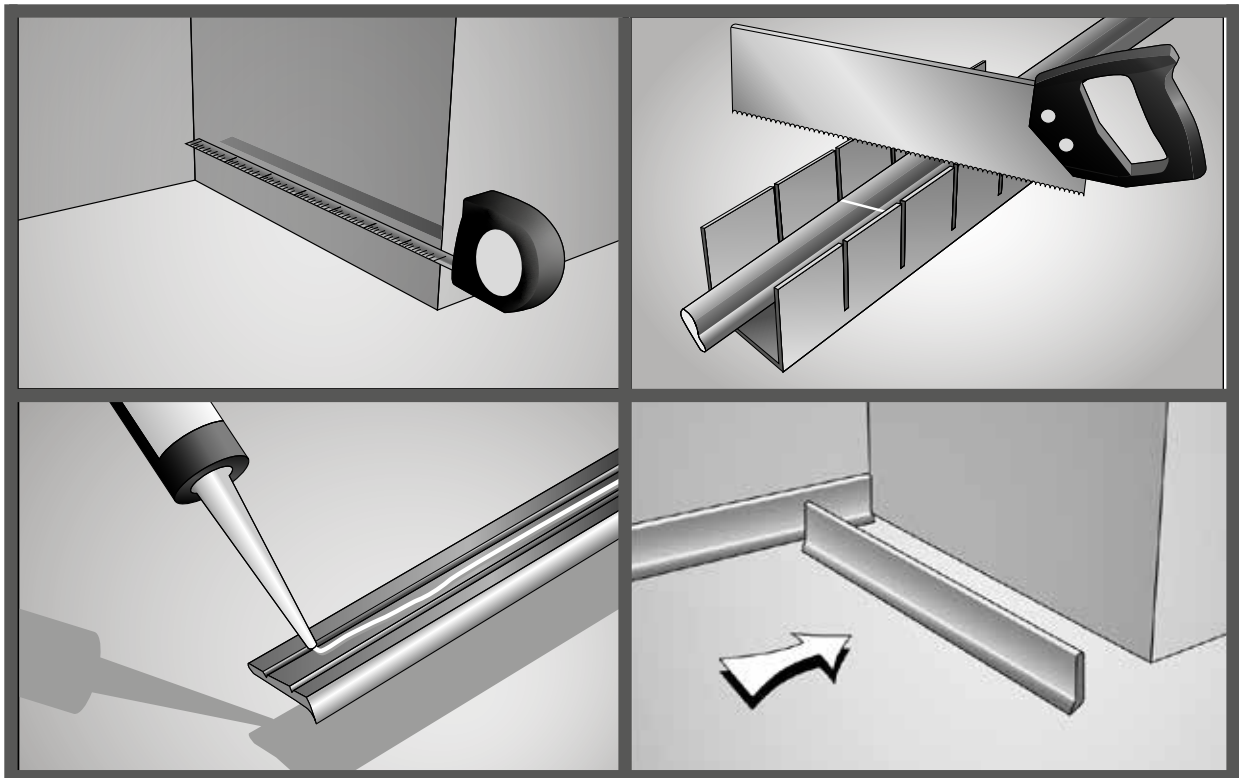
- Prepare the skirting at the walls. Skirting can be the same LVT plank, or wood, or metallic, which is in harmony with the design of LVT. In this case we recommend our GraboProfil Design Skirting 58mm. The decorative set-on skirtings are made with a rigid support in order to insert the floor covering and have a perfect color match. Application of a decorative compact PVC set-on is also possible, in this case we recommend our GraboProfil Hard-Foam Skirting 60mm with decorative film. They are also waterproof and coordinating colors for a perfect finish. Decorative set-on skirtings are compatible with all LVT floors (Glue-Down, Click).



- Use silicone seals at the joints of LVT planks and skirting.

5. Installing Skirtings

- Measure your walls. Remember to accommodate for the 45° angles on the corners. (For inside corners, the 45° angle will be cut inwards. For outside corners, the 45° will be cut outwards)
- Cut it to size. The best way to use a mitre saw is to secure it to a workbench or something similar.
- Apply the adhesive to the back of the skirting in a wide zigzag pattern. Make sure you cover enough of the height of the skirting



- Push the bottom down first and then the rest. Hold it in place for a few minutes

6. Cleaning and maintenance

Basic and periodical cleaning by machine

Remove solid dirt from the surface by sweeping or vacuum-cleaning.

Tools: alkaline cleaning detergent, mono-disc cleaning machine with red pad and damp sweeping equipment.

Technology of basic/periodical cleaning:

The cleaning solution should be dispersed on a surface of 5-10 m² area should be scrubbed after an acting time of 10-15 minutes, then the cleaning agent should be absorbed, the surface should be rinsed with clean water, and lastly, the water should be absorbed again.

The periodical cleaning should be done with a frequency according to the grade of uses.

Daily cleaning

Remove solid dirt from the surface by sweeping or vacuum-cleaning then make wet cleaning manually or with a mono-disc machine with white pad.

Manual wet cleaning:

Tools: mop, (microfiber mop is the best), damp sweeping equipment, cleaning agent (generally neutral or light alkaline detergent)

Cleaning should be performed with the two-bucket method.

Mechanical wet cleaning:

For daily mechanical cleaning use mono-disc cleaning machine with white pad. Use neutral or light alkaline cleaning agent.

Never use abrasive products and any material that risks damaging of the surface.

Never use rubber caps on furniture legs.

Recommended cleaning agents:

Manufacturers / Products: Werner&Mertz GmbH / TANA (Innomat, Tana) and Dr. Schutz (PU Cleaner, Elatex)

Basic and periodical cleaning with machine:

Innomat dilution 3% or PU Cleaner dilution 10%

Daily machine cleaning:

Innomat dilution 0,5% or PU Cleaner dilution 0,5%

Daily manual cleaning:

Tana SR 13 0,5-1% dilution or PU Cleaner 0,5% dilution

Stain removal:

Tana Sprinter or Elatex

Other similar cleaning agents can be used as well.

7. Underfloor heating

The surface temperature of the subfloor should never exceed 28 °C.

Switch off the underfloor heating system 48 hours before starting the installation of LVT and leave it off at least 48 hours after installation. You can find detailed information on the website www.graboplast.com or contact the dealer.